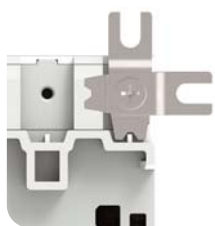
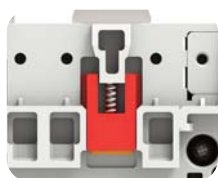


SWITCH DISCONNECTORS



● FLEXIBLE INSTALLATION ORIENTATION

Switch disconnectors can be installed in all directions. The clips for screw fixing can be adjusted both in rotation and position (flexible fixing interaxis).



● ANTI-SLIDE INSERT FOR DIN RAIL

Two rubber pad inserts prevent the sliding of switch disconnectors on the DIN rail.

● EASY INSTALLATION ON DIN RAIL

Switch disconnectors are mounted on DIN rail or on mounting plate by screw fixing.

● COMPACT SIZE

The three-pole 160A to 315A AC21 switch disconnectors are made up of a body, merely 162mm wide.

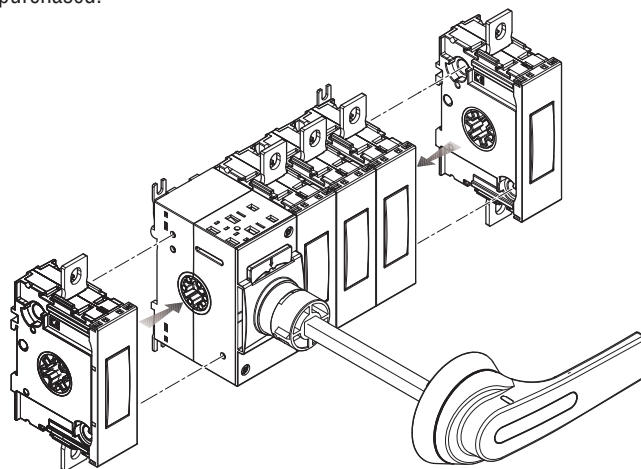
● UL98 VERSION

Switch disconnectors are listed for USA and Canada, certified according to UL98/CSA C22.2 n° 4.



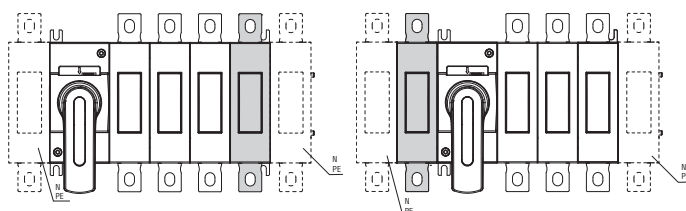
● FOUR POLE VERSION AVAILABLE

Switch disconnectors are supplied with three-pole configuration. To realise the four-pole version, a fourth-pole add-on can be purchased.



● COMPONENT FLEXIBILITY

It is possible to mount the fourth pole, neutral and earth/ground terminals on both sides of the switch disconnectors using 2 screws.



Switch disconnectors

GL series 160A to 315A

● WIDE RANGE OF ACCESSORIES

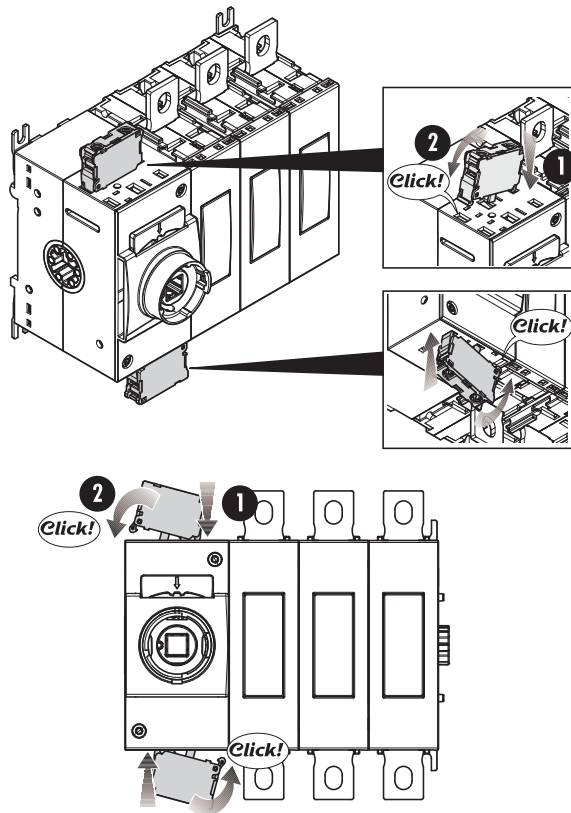
A wide choice of auxiliary contacts, terminal covers, phase barriers, terminal clamps, bridging bars, shafts and handles are available to satisfy every installation need.

● HIGH IEC ELECTRICAL CAPABILITY

The rated currents in AC23 up to 250A - 690VAC are the highest of the category.

● ADD-ON AUXILIARY CONTACTS

The same add-on block is suitable for all the switch disconnectors and changeover switches. Contacts are mounted on main switching actuator (max 8 contacts).



● VISIBLE CONTACTS

Thanks to the window on the individual power poles the open or closed switch status is clearly visible at a distance.



● UL508A HANDLE VERSION

In compliance with UL508A standards, which require internal panel inspection by authorized personnel with power applied, pistol handles are available with defeatable feature of the door coupling when the switch disconnector or the changeover switch is closed, i.e. in ON position.

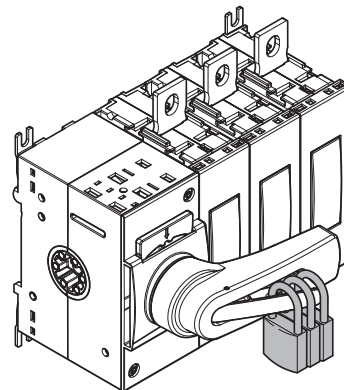
● IP66 AND NEMA 4X HANDLES

A wide range of screw fixing pistol grip handles is available with the maximum degree of protection on the market.



● PADLOCKABLE HANDLES

All direct and door coupling handles are equipped with integrated padlock mechanism.

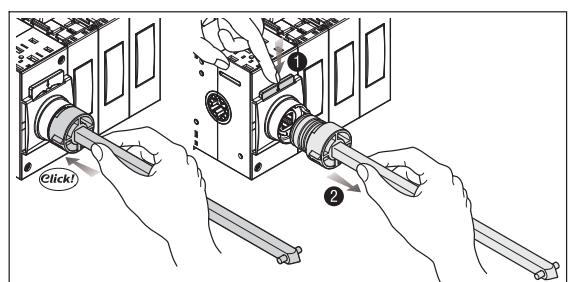


● HANDLES

Switch disconnectors and changeover switches are standard supplied without any handles.
By purchasing the direct handle separately it is possible to realise the direct operating version.
By purchasing a shaft extension and a door coupling handle separately it is possible to realise the door coupling version.

● SHAFT MOUNTING

Shafts can be mounted and removed very easily by snapping on the front of the switch. This feature allows fast installation and easy accessibility to the panel in case of maintenance.



Switch disconnectors

GL series 160A to 315A

IEC/EN three-pole switch disconnectors



GL...C1

Order code	IEC conventional free air thermal current Ith AC21A (≤690V)	IEC rated operational current Ie AC22A (≤690V) AC23A (≤415V)	Qty per pkg	Wt
	[A]	[A]	n°	[kg]

Supplied without handle.

Complete the switch disconnector by selecting shaft extension and handle for door coupling version or the handle for direct operating version (see page 6).

GL0160 C1	160	160	1	1.500
GL0200 C1	200	200	1	1.500
GL0250 C1	250	250	1	1.500
GL0315 C1	315	250	1	1.500

UL98 three-pole switch disconnectors



GL0200 C1UL

Order code	General purpose current	Max. 3-phase horsepower rating	Qty per pkg	Wt
	[A]	[HP/V]	n°	[kg]

Supplied without handle.

Complete the switch disconnector by selecting shaft extension and handle for door coupling version or the handle for direct operating version (see page 6).

GL0200 C1UL	200	75/240 150/480 200/600	1	1.600
--------------------	-----	------------------------------	---	-------

IEC/EN fourth pole add-on



GLX42 0315

Order code	IEC conventional free air thermal current Ith AC21A (≤690V)	IEC rated operational current Ie AC22A (≤690V) AC23A (≤415V)	Qty per pkg	Wt
	[A]	[A]	n°	[kg]

Simultaneous closing operation as switch disconnector poles. For GL0160 C1...GL0315 C1 versions.

GLX42 0315	315	250	1	0.200
-------------------	-----	-----	---	-------

UL98 fourth pole add-on



GLX42 0200UL

Order code	General purpose current	Max. 3-phase horsepower rating	Qty per pkg	Wt
	[A]	[HP/V]	n°	[kg]

Simultaneous closing operation as switch disconnector poles. For GL0200 C1UL version.

GLX42 0200UL	200	75/240 150/480 200/600	1	0.200
---------------------	-----	------------------------------	---	-------

General characteristics

- 160 to 315A AC21 versions
- 200A general purpose according to UL98
- Compact dimensions and add-on fourth-pole
- Screw or 35mm DIN rail fixing
- Possibility to adjust the position of the clips for screw fixing on plate
- Visible contacts
- Maximum number of power poles: 4.

Operational characteristics

- Rated insulation voltage Ui: 1,000V
- Rated impulse withstand Uimp: 12kV
- Mechanical life:
 - 20,000 cycles.

Certifications and compliance

Certifications obtained: cULus according to UL98 /

CSA C22.2 n°4 for GL...UL and GLX42...UL types.

Compliant with standards: IEC/EN 60947-3, IEC/EN 60947-1.

Strokes of GL poles

(main poles and add-on pole)

